



# 生物辨認冊

ORGANISM IDENTIFICATION KIT

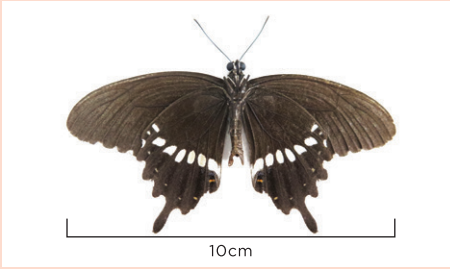


林地

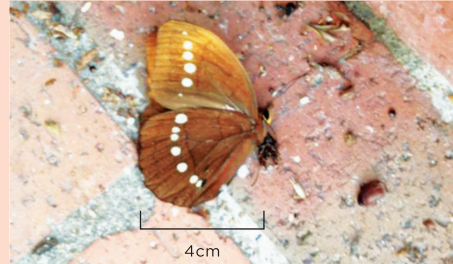
WOODLAND



***Papilio polytes***  
玉帶鳳蝶 Common Mormon  
鱗翅目 鳳蝶科



***Faunis eumeus eumeus***  
串珠環蝶 Large Faun  
鱗翅目 蛺蝶科



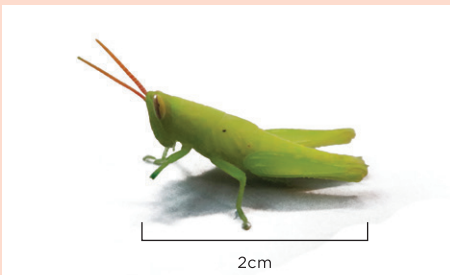
***Lasiocampidae sp.***  
枯葉蛾科 (幼蟲) Moth (Larva)  
鱗翅目 枯葉蛾科



***Trilophidia annulata***  
疣蝗 Bang-winged Grasshopper  
直翅目 斑翅蝗科



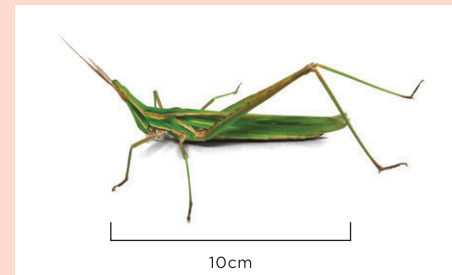
***Ceracris fasciata***  
黑翅竹蝗 Tooth-legged Grasshopper  
直翅目 網翅蝗科



***Velarifictorus sp.***  
鬥蟋 Field Cricket  
直翅目 蟋蟀科



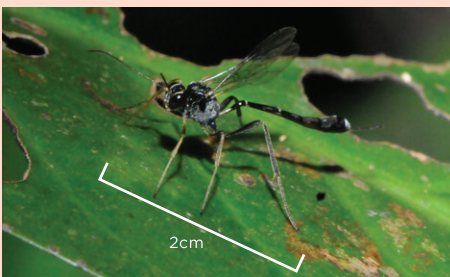
***Acrida cinerea***  
中華劍角蝗 Long-headed Grasshopper  
直翅目 劍角蝗科



***Sceliphron javanum***  
黑盾壁泥蜂 Mud Dauber Wasp  
膜翅目 細腰蜂科



***Ichneumonidae sp.***  
姬蜂科 Ichneumon  
膜翅目 姬蜂科



***Polyrhachis dives***  
雙齒多刺蟻 Spiny Ant  
膜翅目 蟻科



***Camponotus sp.***  
蟻 (弓背蟻屬) Carpenter Ant  
膜翅目 蟻科

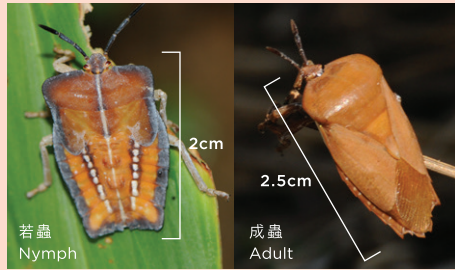


***Oecophylla smaragdina***  
黃猓蟻 Weaver Ant  
膜翅目 蟻科

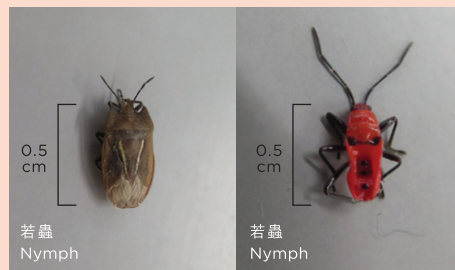




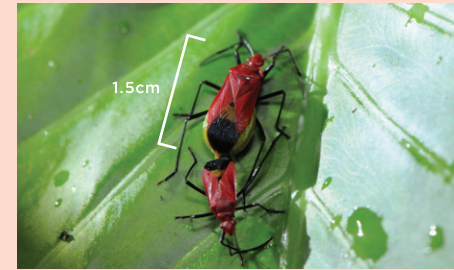
***Tessarotoma papillosa***  
荔枝 Lychee Stink Bug  
半翅目 荔枝蝽科



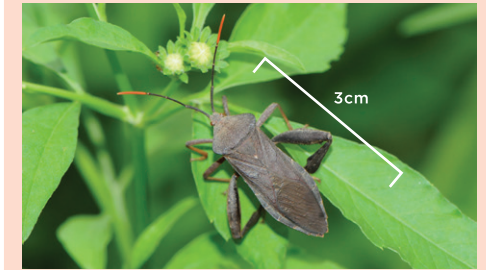
***Pentatomidae sp. Reduviidae sp.***  
蝽科 Stink Bug 獵蝽科 Assassin Bug  
半翅目 蝽科 半翅目 獵蝽科



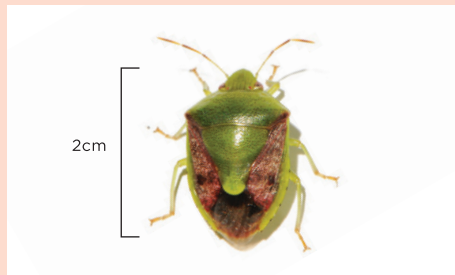
***Dindymus rubiginosus***  
泛光紅蝽 Red Bug  
半翅目 長蝽科



***Pseudomictis distinctus***  
長腹伏緣蝽 Leaf-footed Bug  
半翅目 蝽蝽科



***Plautia fimbriata***  
珀蝽 Brown Stink Bug  
半翅目 蝽科



***Gonocephalum sp.***  
土甲 Dusty Brown Beetle  
鞘翅目 擬步甲科



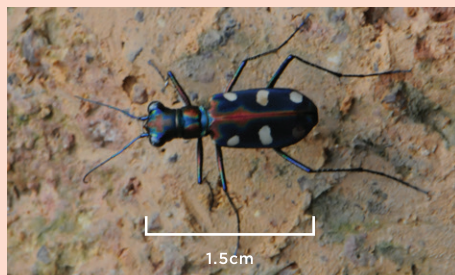
***Menochilus sexmaculata***  
六斑月瓢蟲 Ladybird Beetle  
鞘翅目 瓢蟲科



***Aspidomorpha furcata***  
甘薯梳龜甲 Tortoise Beetle  
鞘翅目 葉甲科



***Cosmodela aurulenta juxtata***  
金斑虎甲 Blue Spotted Tiger Beetle  
鞘翅目 虎甲科



***Chiagosnius obscuripes***  
重脊叩甲 Click Beetle  
鞘翅目 叩甲科



***Scarabaeidae sp.***  
花金龜 (幼蟲) Chafer (Larva)  
鞘翅目 金龜科



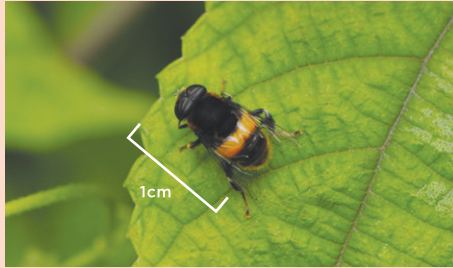
***Gaeana maculata***  
斑蟬 Spotted Black Cicada  
同翅亞目 蟬科



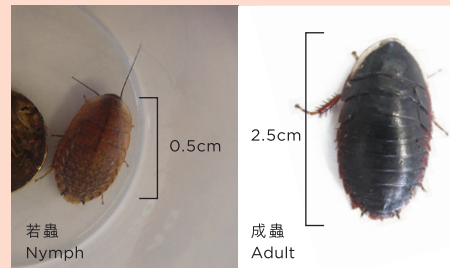
***Cryptotympana sp.***  
蚱蟬 (蛻) Large Brown Cicada (slough)  
同翅亞目 蟬科



***Phytomyia zonata***  
羽芒寬盾蚜蠅 Hover Fly  
雙翅目 食蚜蠅科



***Opisthoptatia orientalis***  
金邊土蠊 Oriental Cockroach  
蜚蠊目 光蠊科



**Anisolabididae sp.**  
蠓螞 Earwig  
革翅目 肥螞科



**Psocoptera**  
嚙蟲 Booklice  
嚙蟲目



**Oniscidea**  
土蠊 Woodlouse  
軟甲綱 潮蟲亞目



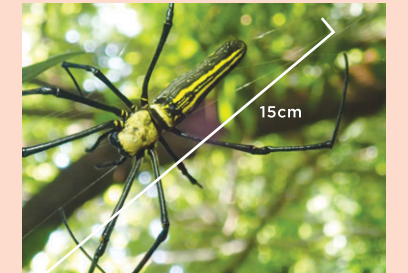
**Diplopoda**  
圓千足蟲 Round Millipede  
倍足綱



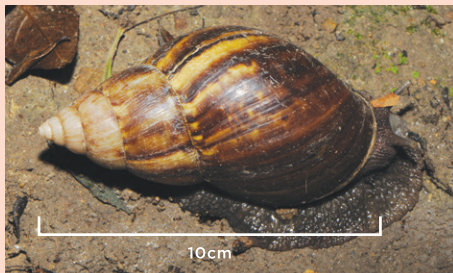
**Chilopoda**  
蜈蚣 Centipede  
唇足綱



***Nephila pilipes***  
大木林蜘蛛 Giant Woods Spider  
蛛形綱



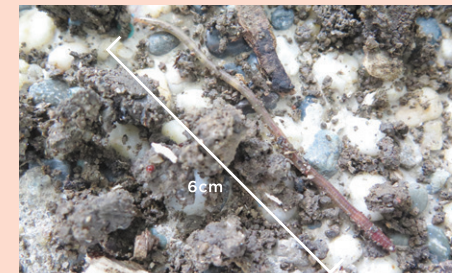
***Achatina fulica***  
非洲大蝸牛 African Snail  
軟體動物門 腹足綱



***Criptosoma imperiator***  
樹棲蝸牛 Aboreal Snails  
軟體動物門 腹足綱



***Typhlonectes sp.***  
蚯蚓 Earthworm  
環節動物門 環帶綱




***Duttaphrynus melanostictus***  
黑眶蟾蜍 Asian Common Toad  
脊索動物門 兩棲綱



 *Microcos nervosa*  
布渣葉 Microcos




葉互生 Alternate Leaf arrangement  
葉質粗糙 Rough leaves

 *Sapium sebiferum*  
烏柏 Chinese Tallow-tree



葉片 Leaf  
葉尖 Leaf apex

 *Dimocarpus longan*  
龍眼 Longan



偶數羽狀複葉 Even-pinnate Compound leaf  
葉片 Leaf

 *Acacia confusa*  
台灣相思 Taiwan Acacia




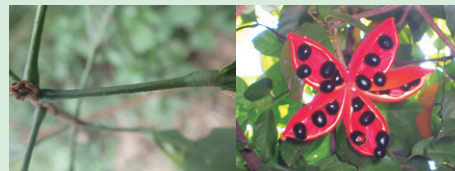
鐮狀彎曲葉柄 (葉片退化) Crescent-shaped petiole (Leaf degenerate)  
豆莢 Bean pod

 *Macaranga tanarius*  
血桐 Elephant's Ear




樹幹分枝 Trunk and branches  
葉片 Leaf

 *Sterculia lanceolata*  
假蒺藜 Lance-leaved Sterculia



葉柄兩端膨大 Leaf stalk swollen at both ends  
果實 Fruit

 *Rhus chinensis*  
鹽膚木 Sumac



葉片 Leaf  
葉柄有翅 Petiole often with wings

 *Leucaena leucocephala*  
銀合歡 White Popinac





二回羽狀複葉 Bipinnate leaf arrangement  
葉片 Leaf

  *Ligustrum sinense*  
山指甲 Chinese Privet



葉對生  
Opposite leaf arrangement

葉片  
Leaf

  *Mallotus paniculatus*  
白楸 Turn-in-the-wind



長葉柄  
Long petiole

葉背面呈白色  
White surface on down-side leaf

 *Celtis sinensis*  
朴樹 Chinese Hackberry



葉緣上半部有小鋸齒  
Serrate leaf margin at upper part

葉質粗糙  
Rough leaves

 *Schefflera heptaphylla*  
鴨腳木 Ivy tree



花與果  
Flower and fruit

掌狀複葉  
Palmate

 *Syzygium jambos*  
蒲桃 Rose Apple



葉片  
Leaf


葉底  
lower surface of leaf

 *Ilex asprella*  
梅葉冬青 Rough-leaved Holly



莖枝上有白色皮孔  
Branches with white lenticels

雌花  
Pistillate flower

 *Breynia fruticosa*  
黑面神 Waxy Leaf



葉互生  
Leaf arrange in alternate

葉片  
Leaf

 *Oxyceros sinensis*  
雞爪筋 Chinese-Randia



枝幹有刺  
Thorns on branches

葉片  
Leaf

**Psychotria asiatica**  
九節/山大刀 Wild Coffee



枝幹出現多節紋理(托葉痕)  
Section-cut patterns on branches  
(Stipular scars)

果實  
Fruit

**Ardisia crenata**  
朱砂根 Hilo Holly



葉邊緣波狀  
Leaves with wavy margin

果實  
Fruit

**Atalantia buxifolia**  
酒餅筋 Box-leaved Atalantia



枝幹有刺  
Thorns on branches

葉片  
Leaf

**Pandanus tectorius**  
露兜樹 Screw Pine



葉邊緣有細鋸齒  
Leaf margin serrate

葉片  
Leaf

**Paederia scandens**  
雞矢藤 Chinese Feverine



葉對生  
opposite leaf arrangement

葉底  
Lower surface of leaf

**Alpinia zerumbet**  
艷山薑 Shell Ginger



葉片  
Leaf

果實  
Fruit

**Mikania micrantha**  
薇甘菊 Mile-a-minute Weed



心型葉片  
Hearted-shaped Leaf

葉片  
Leaf

**Ficus pumila**  
薛荔 Creeping Fig



葉互生  
Alternate leaf arrangement

果實  
Fruit

**Lantana camara**  
馬纓丹 Lantana



花  
Flower

葉片  
Leaf

**Polygonum chinense**  
火炭母 Chinese Knotweed



葉片上有個深紫色“V”字形斑紋  
“V” pattern in dark purple color  
on leaves

花  
Flower

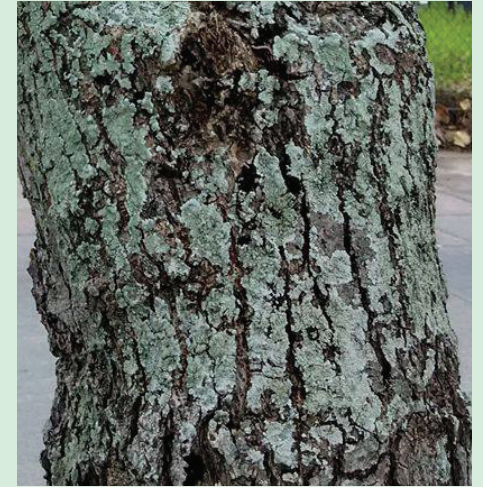
**Alocasia macrorrhizos**  
海芋 Giant Alocasia



葉片  
Leaf

花  
Flower

**Dirinaria sp.**  
脊衣 Dirinaria



**Graphidaceae sp.**  
文字衣科 Graphidaceae



放大5倍  
Magnification x 5

**Chrysothrix candelaris**  
金絮衣科 Chrysothricaceae



**Auricularia polytricha**  
毛木耳 Chinese Wood Ear



**Pycnoporus sp.**  
多孔菌科 Polypopaceae







版權所有，不得翻印或轉載，  
只可影印作非牟利教育用途，  
並必須清楚註明出處。

All articles and photographs in this publication may not  
be reprinted or reproduced, except for nonprofit educational  
purposes. Sources must be clearly indicated.  
All rights reserved.